

Project overview

RES is currently consulting on its plans for a proposed wind farm called Dunbeg South Extension located on lands to the north of A37 and to the west of the existing Dunbeg Wind Farm and lands to the south of A37 adjacent to a disused quarry, in the townlands of Dunbeg and Dunmore approximately 6.2km northeast from Limavady, Co. Derry/Londonderry.

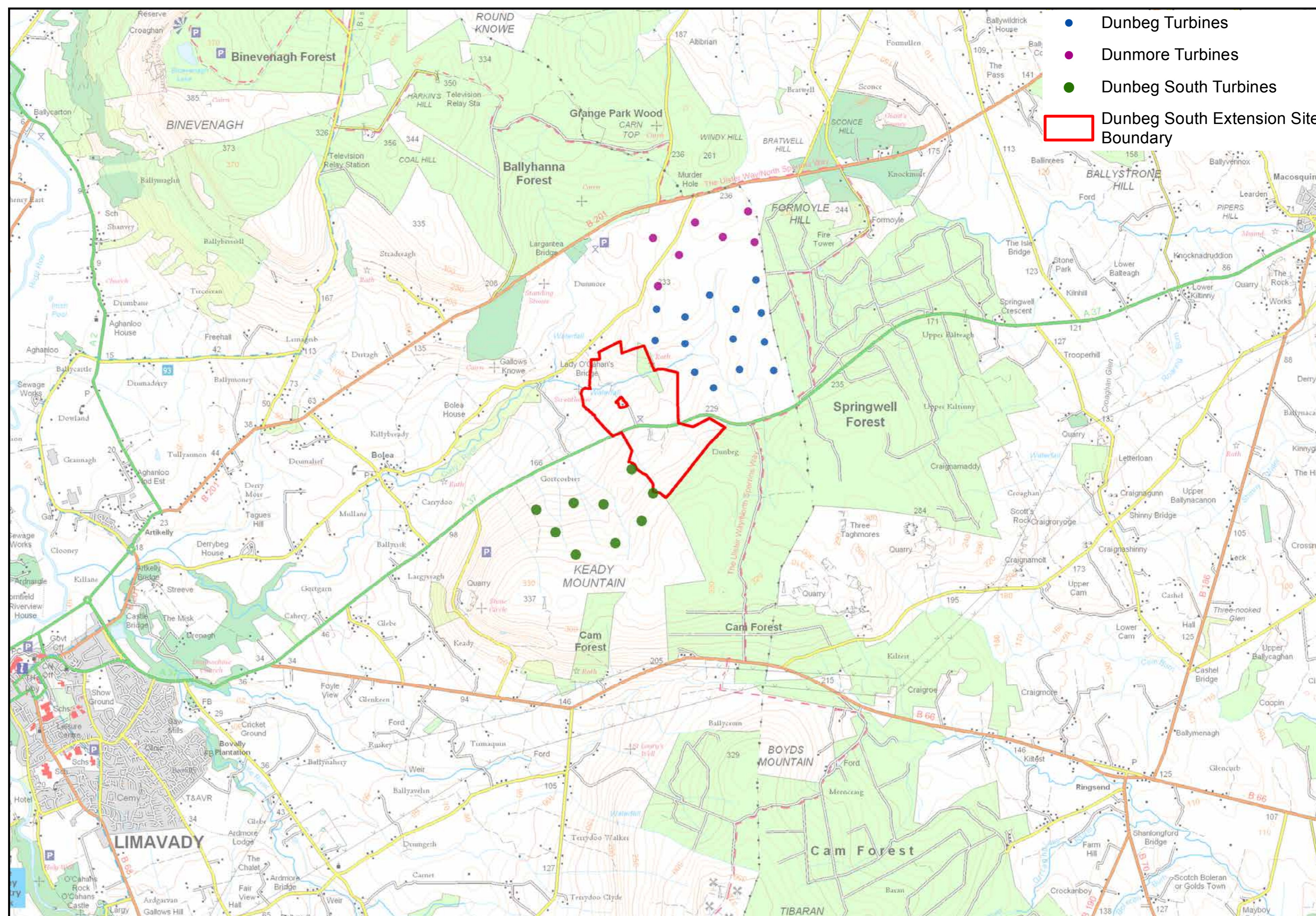
Dunbeg South Extension Wind Farm is being designed to generate reliable, renewable electricity, whilst minimising local impacts and maximising local benefits wherever possible.

The wind farm would be capable of generating around 16.8MW, enough to power around 17,000¹ homes with clean, low-cost electricity.

We are considering opportunities to share infrastructure with the consented Dunbeg South Wind Farm, located to the southwest, to reduce the environmental footprint of the site.

We hope to submit a planning application to Causeway Coast and Glens Borough Council in Summer 2024.

© crown copyright and database right 2024 licence no. 242



¹The homes figure has been calculated by taking the predicted annual electricity generation of the site (based on RES assessments Dunbeg South Extension has a predicted capacity factor of 38.3%) and dividing this by the annual average electricity figures from the Department of Business, Energy and Industrial Strategy (BEIS) showing that the annual UK average domestic household consumption is 3,239 kWh (Jan 2024).

Dunbeg South Extension Wind Farm Proposal

www.dunbegsouthextension-windfarm.co.uk

RES
power for good