



# DUNBEG SOUTH EXTENSION- WIND FARM

## Figure 4.5 (page 1 of 2) Zone of Theoretical Visibility 15 km radius, hub height

### KEY

Dunbeg South Extension proposed turbines

LVIA Viewpoint Locations (detailed in Figure 4.3)

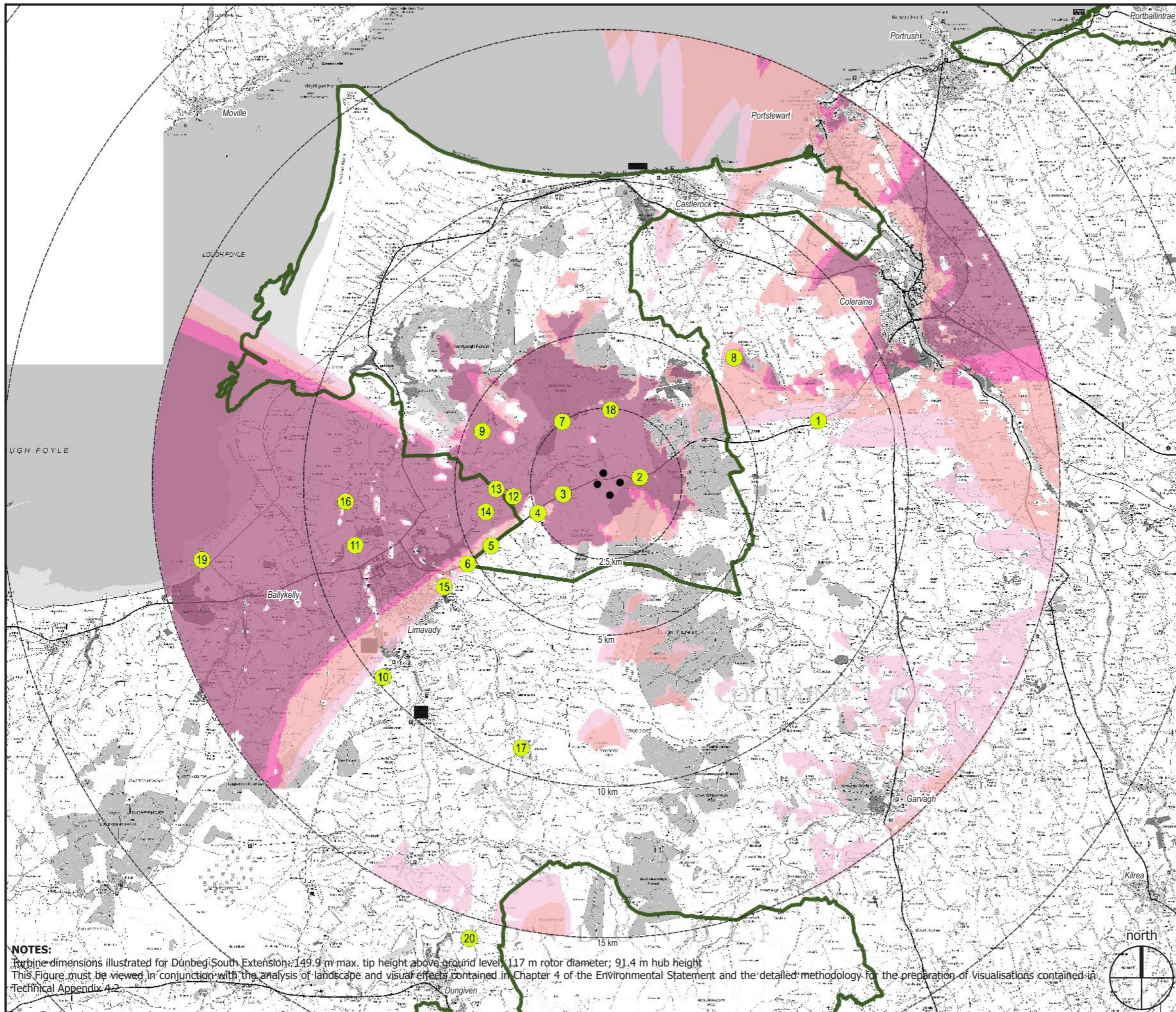
Zone of Theoretical Visibility of:

- 1 turbine across 7.58 % of Study Area
- 2 turbines across 9.80 % of Study Area
- 3 turbines across 2.07 % of Study Area
- 4 turbines across 19.15 % of Study Area

Total area with theoretical visibility of at least hub: 38.60 %

Areas with no visibility are unshaded: 61.40 %

Area of Outstanding Natural Beauty



**NOTES:**  
 Turbine dimensions illustrated for Dunbeg South Extension: 149.9 m max. tip height above ground level; 117 m rotor diameter; 91.4 m hub height  
 This Figure must be viewed in conjunction with the analysis of landscape and visual effects contained in Chapter 4 of the Environmental Statement and the detailed methodology for the preparation of visualisations contained in Technical Appendix 4.2



**Shanti McAllister**  
landscape planning  
and design ltd.

### LANDSCAPE AND VISUAL IMPACT ASSESSMENT

DRAWN / APPROVED: SMc / DMcv	DATE: Oct. 2024	SCALE & PRINT SIZE: 1:125,000 @ A3	REVISION: A
TURBINE LAYOUT NO: PNIRcss032		0 5km	

THIS DRAWING IS THE PROPERTY OF RENEWABLE ENERGY SYSTEMS LTD. AND NO REPRODUCTION MAY BE MADE IN WHOLE OR IN PART WITHOUT PERMISSION



### DUNBEG SOUTH EXTENSION- WIND FARM

**Figure 4.5 (page 2 of 2)**  
**Zone of Theoretical Visibility**  
15 km radius, blade tip height

#### KEY

Dunbeg South Extension proposed turbines

LVIA Viewpoint Locations (detailed in Figure 4.3)

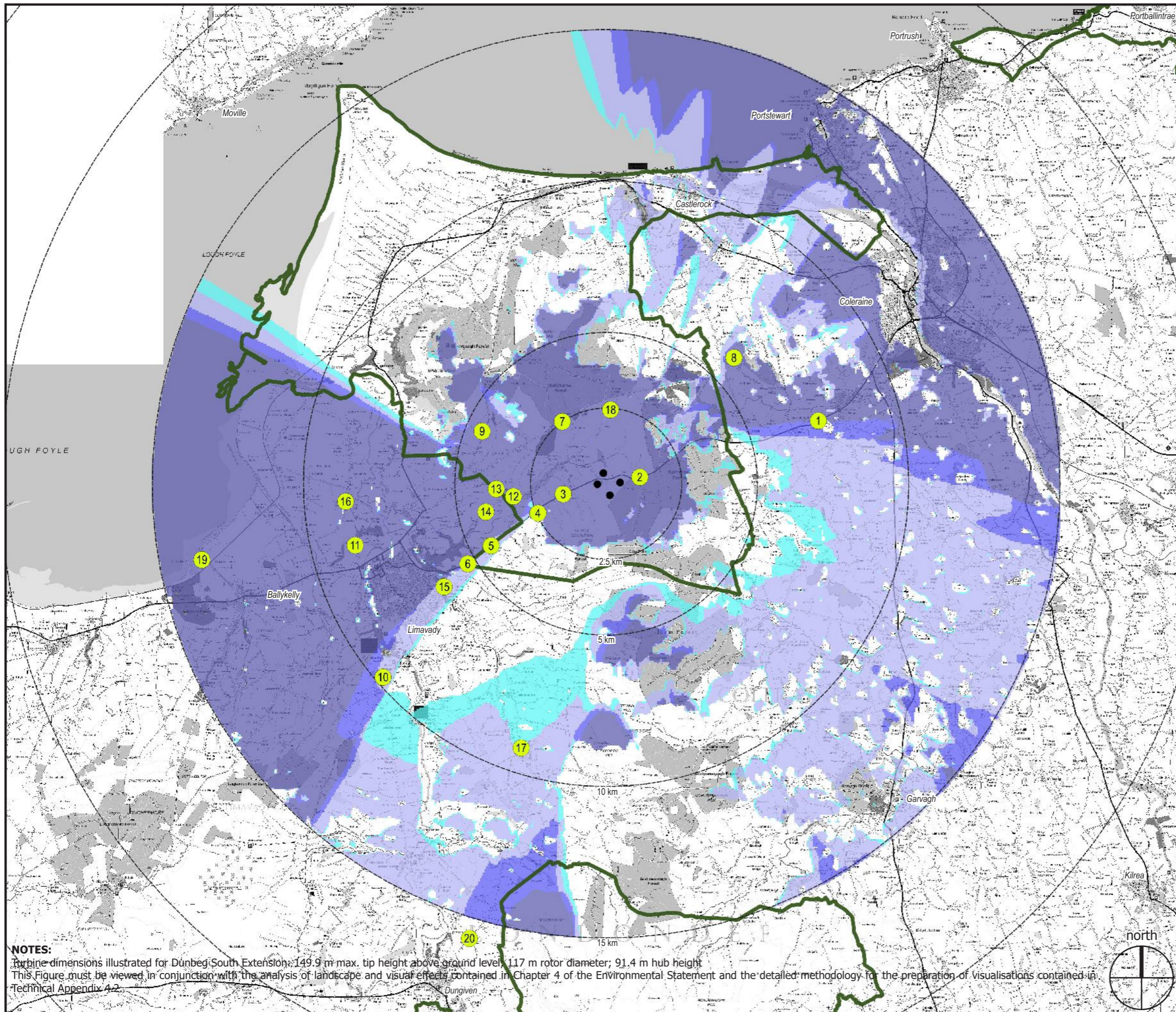
Zone of Theoretical Visibility of:

- 1 turbine across 4.76 % of Study Area
- 2 turbines across 20.19 % of Study Area
- 3 turbines across 4.33 % of Study Area
- 4 turbines across 32.45 % of Study Area

Total area with theoretical visibility of at least 1 blade tip: 61.73 %

Areas with no visibility are unshaded: 38.27 %

Area of Outstanding Natural Beauty



**NOTES:**  
 Turbine dimensions illustrated for Dunbeg South Extension: 149.9 m max. tip height above ground level; 117 m rotor diameter; 91.4 m hub height  
 This Figure must be viewed in conjunction with the analysis of landscape and visual effects contained in Chapter 4 of the Environmental Statement and the detailed methodology for the preparation of visualisations contained in Technical Appendix 4.2



**Shanti McAllister**  
landscape planning  
and design ltd.

#### LANDSCAPE AND VISUAL IMPACT ASSESSMENT

DRAWN / APPROVED: SMc / DMcV	DATE: Oct. 2024	SCALE & PRINT SIZE: 1:125,000 @ A3	REVISION: A
TURBINE LAYOUT NO: PNIRcss032		0  5km	

THIS DRAWING IS THE PROPERTY OF RENEWABLE ENERGY SYSTEMS LTD. AND NO REPRODUCTION MAY BE MADE IN WHOLE OR IN PART WITHOUT PERMISSION