

Notes: Dunbeg South Extension turbines shown in blue. Turbine dimensions illustrated: 149.9 m max. tip height above ground level; 117 m rotor diameter; 91.4 m hub height. Where present in view: Existing wind farms in red; Consented wind farms in orange; Proposed wind farms in green; Single turbines in pink / in the baseline photography.

This material is based upon Ordnance Survey digital data © Crown Copyright 2024 and is reproduced with the permission of Land and Property Services under delegated authority from the Controller of Her Majesty's Stationery Office. All rights reserved. Licence No. 242.



Shanti McAllister
landscape planning
and design ltd.

**LANDSCAPE AND VISUAL
IMPACT ASSESSMENT**

DRAWN / APPROVED:	DATE:	PRINT SIZE:	REVISION:
SMc / DMcV	Sept. 2024	A3	A

TURBINE LAYOUT NO:
PNIRcss032

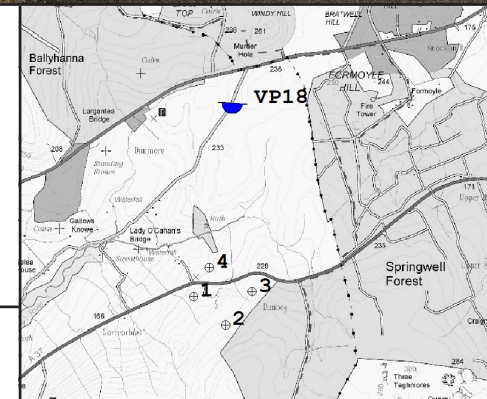
THIS DRAWING IS THE PROPERTY OF RENEWABLE ENERGY SYSTEMS LTD. AND NO REPRODUCTION MAY BE MADE IN WHOLE OR IN PART WITHOUT PERMISSION

DUNBEG SOUTH EXTENSION WIND FARM

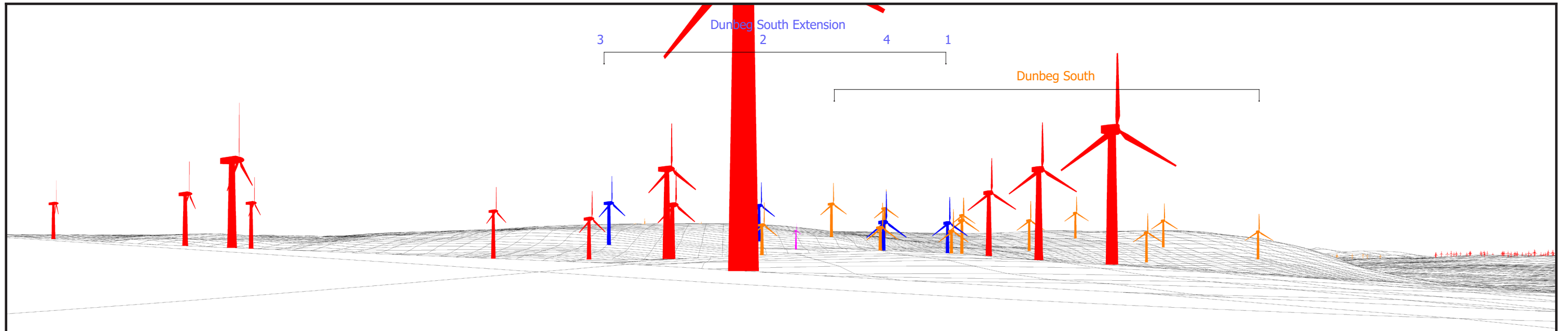
Figure 4.26 (page 1/2)

VIEWPOINT 18
Bolea Road upper near Dunmore Wind Farm
wireline and photomontage

Easting: 274841
Northing: 428503
Elevation A.O.D: 226 m
Bearing: 183.64 °
Approx. Included Angle: 80 °
Approx. distance to nearest turbine: 2.11 km to T4



NOTE: This Figure must be viewed at a comfortable arms length and in conjunction with the analysis of landscape and visual effects contained in Chapter 4 of the Environmental Statement and the detailed methodology for the preparation of visualisations contained in Technical Appendix 4.2, in particular the paragraphs referencing Scottish Natural Heritage Guidance regarding the limitations of visualisations.



Notes: Dunbeg South Extension turbines shown in blue. Turbine dimensions illustrated: 149.9 m max. tip height above ground level; 117 m rotor diameter; 91.4 m hub height. Where present in view: Existing wind farms in red; Consented wind farms in orange; Proposed wind farms in green; Single turbines in pink / in the baseline photography.

This material is based upon Ordnance Survey digital data © Crown Copyright 2024 and is reproduced with the permission of Land and Property Services under delegated authority from the Controller of Her Majesty's Stationery Office. All rights reserved. Licence No. 242.



Combined photomontage showing consented Dunbeg South and proposed Extension

Shanti McAllister landscape planning and design Ltd.				DUNBEG SOUTH EXTENSION WIND FARM		Easting: 274841 Northing: 428503 Elevation A.O.D: 226 m Bearing: 183.64 ° Approx. Included Angle: 80 ° Approx. distance to nearest turbine: 2.11 km to T4			
LANDSCAPE AND VISUAL IMPACT ASSESSMENT				Figure 4.26 (page 2/2)					
VIEWPOINT 18 Bolea Road upper near Dunmore Wind Farm wireline and combined photomontage									
DRAWN / APPROVED: SMc / DMcV	DATE: Sept. 2024	PRINT SIZE: A3	REVISION: A	NOTE: This Figure must be viewed at a comfortable arms length and in conjunction with the analysis of landscape and visual effects contained in Chapter 4 of the Environmental Statement and the detailed methodology for the preparation of visualisations contained in Technical Appendix 4.2, in particular the paragraphs referencing Scottish Natural Heritage Guidance regarding the limitations of visualisations.					
TURBINE LAYOUT NO: PNIRcss032									
THIS DRAWING IS THE PROPERTY OF RENEWABLE ENERGY SYSTEMS LTD. AND NO REPRODUCTION MAY BE MADE IN WHOLE OR IN PART WITHOUT PERMISSION									