

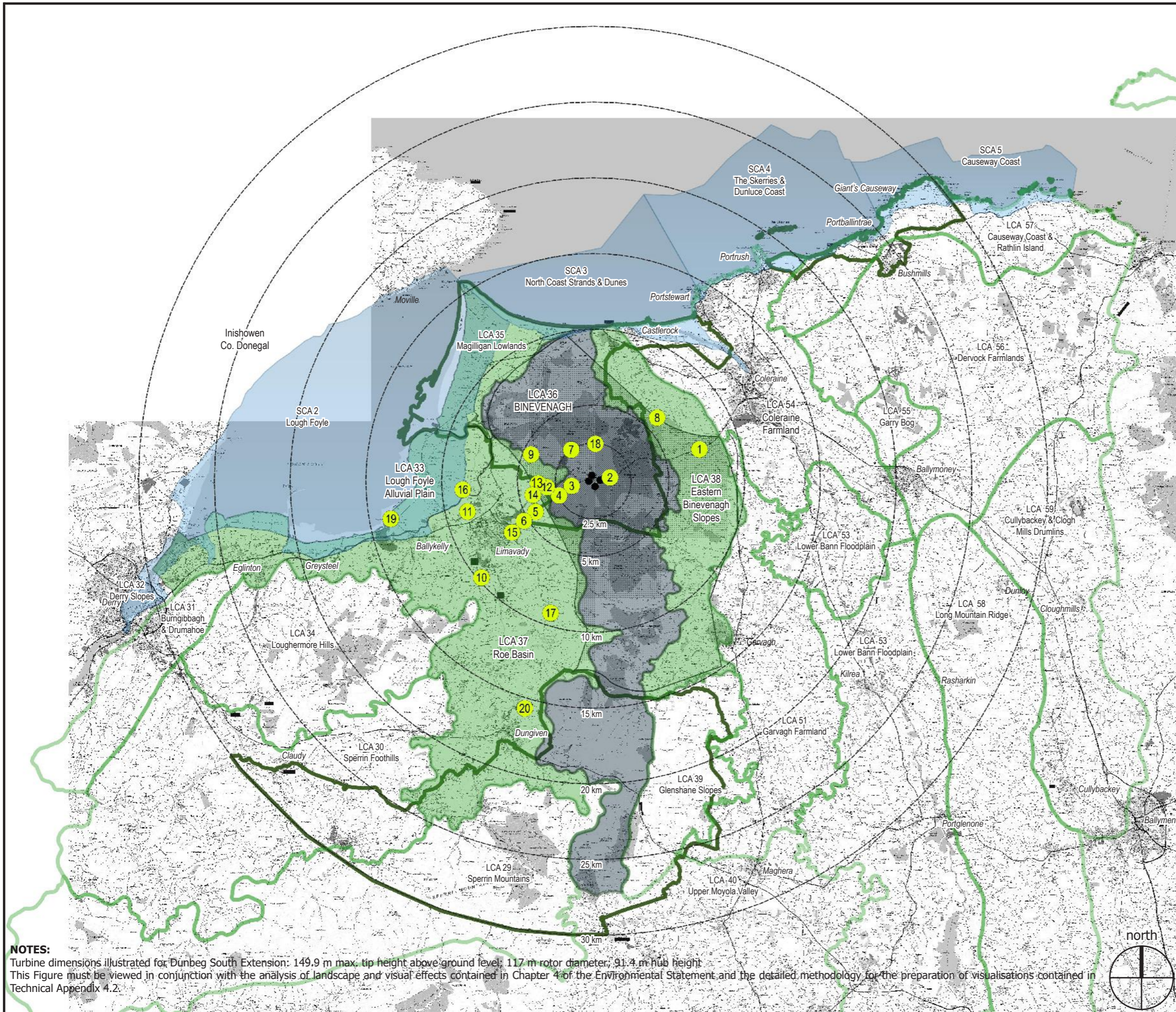


DUNBEG SOUTH EXTENSION WIND FARM

Figure 4.2 Landscape Character Areas

KEY

- Dunbeg South Extension proposed turbines
- LVIA Viewpoint Locations (detailed in Figure 4.3)
- Landscape Character Area (LCA) containing the Development
- Other Landscape Character Areas assessed in the LVIA
- Regional Landscape Character Area 10: Binevenagh Ridge
- Other Landscape Character Areas not assessed in the LVIA
- Area of Outstanding Natural Beauty
- Seascape Character Areas



NOTES:

Turbine dimensions illustrated for Dunbeg South Extension: 149.9 m max. tip height above ground level; 117 m rotor diameter; 91.4 m hub height
 This Figure must be viewed in conjunction with the analysis of landscape and visual effects contained in Chapter 4 of the Environmental Statement and the detailed methodology for the preparation of visualisations contained in Technical Appendix 4.2.

Shanti McAllister
 landscape planning
 and design ltd.

LANDSCAPE AND VISUAL IMPACT ASSESSMENT

DRAWN / APPROVED: SMc / DMcv	DATE: Oct. 2024	SCALE & PRINT SIZE: 1:250,000 @ A3	REVISION: A
TURBINE LAYOUT NO: PNIRcss032		0 5 10km	

THIS DRAWING IS THE PROPERTY OF RENEWABLE ENERGY SYSTEMS LTD. AND NO REPRODUCTION MAY BE MADE IN WHOLE OR IN PART WITHOUT PERMISSION